

briot



Edgers Accura

Family spirit

Accura Range: 5 Solutions to Answer Your Needs

Sx



Accura SX delivers all you need to edge a full range of lenses with accuracy and total peace of mind.

Selected by New Starter shop.

Cx



Accura CX is one of the most accurate edgers on the market. It offers all the latest add-on features that you need to save space and time and maximise output.

Selected by Established shops.

Pro



Accura Pro incorporates the best selling Briot equipment, the Accura CX, with the latest technology to enable ultra high speed output.

Selected by Superstores and Prescription Houses

Cl



Accura CL the product of lens edging know-how, designed to be linked with the state-of-the-art automatic tracing and blocking system, Axcell.

Selected by Axcell enthusiasts.

Lab



Accura Lab is a tough hand in a velvet glove! Heavy duty, high speed mechanical systems driven by sophisticated technology.

Connected to Axcell, it will revolutionise your business.

NEW

**Connecting
Accura Cx
or Accura Pro
is possible.**

Briot: A Brand Name Recognized Worldwide as the

User friendly:

Just follow the intuitive steps of the logical interface without intensive training!



Use the icons on the coloured screen to control the whole process.



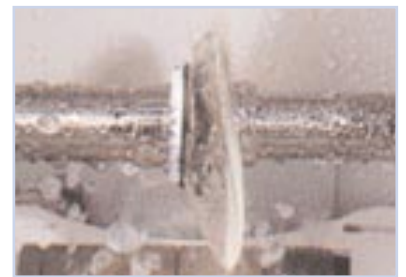
Drop the frame and press one key for automatic scanning.



Insert the lens in the large, "self-cleaned" wheel chamber and start the selected cycle

Accurate:

The Accura is engineered from high precision mechanical parts and the latest digital electronic systems. Accurate sensors and motors ensure a 98% first time fit for edged lenses.



Front and rear lens curves are measured with speed and high precision for optimum bevel control.

Key figures: specifications for each model

The wide range of Accura guarantees a solution adapted to your specific needs.

Accura

Cl



dimensions: W 650 X D 460 X H 535mm
weight: 66Kg
voltage: 115-230V / 50-60Hz
consumption: 1Kw

Accura

Lab



dimensions: W 650 X D 460 X H 535mm
weight: 66Kg
voltage: 230V / 50-60Hz
consumption: 3Kw

Accura

Sx



dimensions: W 650 X D 460 X H 450mm
weight: 70Kg
voltage: 100-115-230V / 50-60Hz
consumption: 1Kw

Accura

Cx



dimensions: W 650 X D 460 X H 450mm
weight: 70Kg
voltage: 100-115-230V / 50-60Hz
consumption: 1Kw

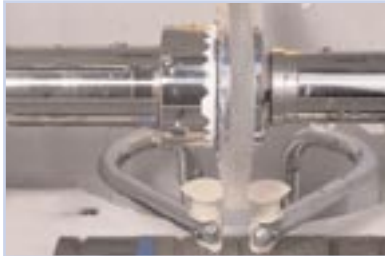
Accura

Pro



dimensions: W 650 X D 460 X H 450mm
weight: 70Kg
voltage: 200-240V / 50-60Hz
consumption: 3Kw

most User-Friendly & Advanced Equipment in the Industry



Electronically regulated lens clamping pressure improves control on brittle and expensive lenses.



Robust, new motorised safety bevel and grooving system for high performance and output.

Useful:

Accura edges any type of lenses with any type of finish with a consistent high level of quality



A choice of two automatic grooving sizes saves time and makes Supra jobs far simpler.



The "Aesthetic bevel" function gives the ultimate control over the finished bevel .



Quality, push button edge polishing, without lens sizing compromise.

Panorama: equipments and their options

Accura : differences

| Wheel types | Sx | Cx | Pro | Cl | Lab |
|-------------------------------|----|----|-----|----|-----|
| Mineral lens roughing wheel | ● | ● | ● | ● | ● |
| Plastic lens roughing wheel | ● | ● | ● | ● | ● |
| Bevel and pat bevel finishing | ● | ● | ● | ● | ● |
| Bevel and pat bevel finishing | ● | ● | ● | ● | ● |
| Functions | | | | | |
| Aesthetic bevel | | ● | ● | ● | ● |
| Esyert bevel | ● | ● | ● | ● | ● |
| Manual bevel | ● | ● | ● | ● | ● |
| Flat bevel | ● | ● | ● | ● | ● |
| Motorised safety bevel | | ● | ● | ● | ● |
| Memory board | ● | ● | ● | ● | ● |
| Bar code scanner | ● | ● | ● | ● | ● |
| 5 dimensions stylus | | ● | ● | | |

* preview before edging

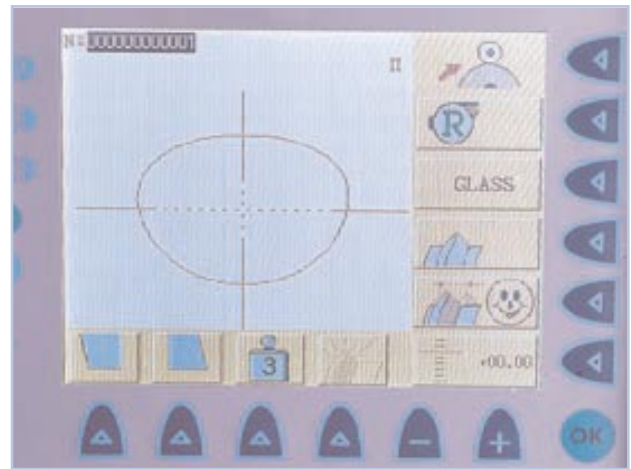
● Standard ● Option

Focusing On 4 Innovative Features



PERFECT FRAME TRACING USING 5 DIMENSIONS :

- + Fully automatic: the scanner controls the position and grip of the frames, avoiding any distortion, even on small and soft frames whilst simultaneously, measuring the thickness of the frame.
- + Dual stylus system : one stylus measures the shape in 3D, whereas the other one registers the depth and profile of the groove, in just a few seconds.



AESTHETIC BEVEL FOR HIGH QUALITY FITTINGS

- + All information coming from the scan is used to ensure the best bevel position on the lens for quick, high quality spectacle assembly.
- + Spot on sizing for maximum safety and minimal lens stress.



CONNECTING ACCURA CX OR ACCURA PRO TO AXCELL

- + Make your life easier with Axcell's state of the art features to increase simplicity and productivity.
- + You can now even benefit from the latest amazing Pattern Recognition Optical System for your rimless jobs. It has never been so simple to cut production costs and concentrate on sales.

EDGING THE SMALLEST LENSES TO FIT THE SMALLEST FRAMES

- + Accura answers the fashion needs. A new safety bevel and grooving system has been developed to better meet your requirements in terms of capabilities and comfort of work. New minimum lens sizes are :

Bevel: 19,50 mm.
Safety Bevel: hauteur minimum : 21,50 mm.
Rimless: 17,75 mm.
Grooving: 18,50 mm.

